



# COVENTRY II

A PROJECT BY

GFS



In the *City*  
At the *Center* of It All







## Welcome to Coventry II

A contemporary residential community that brings urban convenience and peaceful living together. Ideally located in International City 3 (Warsan 4), just steps from the upcoming Dubai Metro Blue Line, this is where your city life begins, and everything you need is always within reach.



A place to *Pause*  
A life to *Enjoy*







# *Dubai*

## Where wonders meet reality

Dubai is more than a destination, it's a global phenomenon. A city where innovation meets ambition, where world-class infrastructure, safety, and opportunity create a lifestyle like no other. From awe-inspiring skyscrapers to tranquil waterfronts, every corner of Dubai is designed for growth, luxury, and lasting value.

And at the heart of this ever-evolving city lies Coventry 2



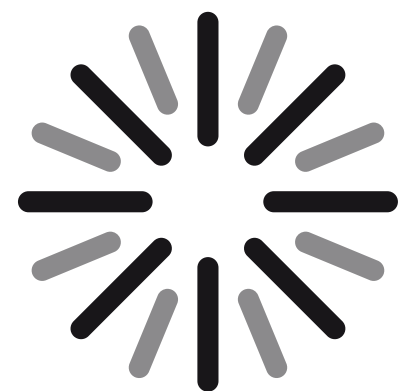


*City Living. Perfectly Placed*

## International City 3 Warsan 4

Nestled within Warsan 4, International City Phase 3 is Dubai's rising residential hub, blending urban convenience with peaceful surroundings. As one of the most anticipated extensions of the well-established International City, this community offers enhanced infrastructure, modern amenities, and exceptional value for homeowners and investors alike.

With wide roads, improved layouts, and the upcoming Metro Blue Line just a 5-minute walk from Coventry 2, everything is within reach, from retail and dining to schools, parks, and major highways.





Where life feels  
*Effortless*





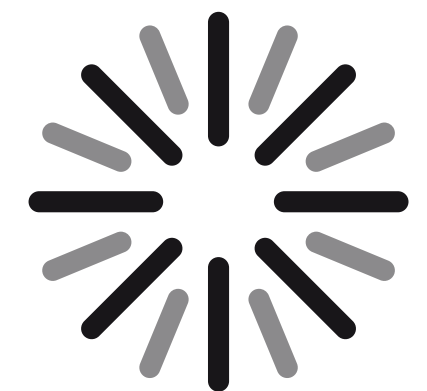


## *Innovating* the way you live

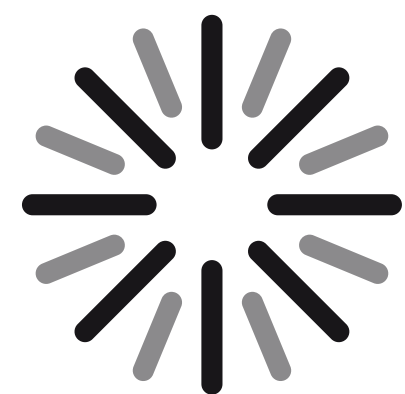
At GFS, we craft more than homes, we create timeless experiences. Our vision transcends walls and structures, delivering spaces where life flourishes and aspirations come to life.

With a foundation built on trust, quality, and a relentless pursuit of excellence, we have spent over two decades transforming communities into landmarks of luxury, comfort, and sustainability.

Coventry 2 is our latest masterpiece, a testament to our unwavering commitment to serene sophistication and unparalleled living. Here, every detail reflects the art of exceptional design, ensuring a lifestyle that is both inspiring and enduring.







COVENTRY II



# Coventry II

Coventry 2 is a modern residential development, thoughtfully designed for today's urban lifestyle. From smart layouts to seamless connectivity, every element reflects a commitment to convenience, quality, and urban elegance.

It's not just where you live,  
it's where life finds balance.







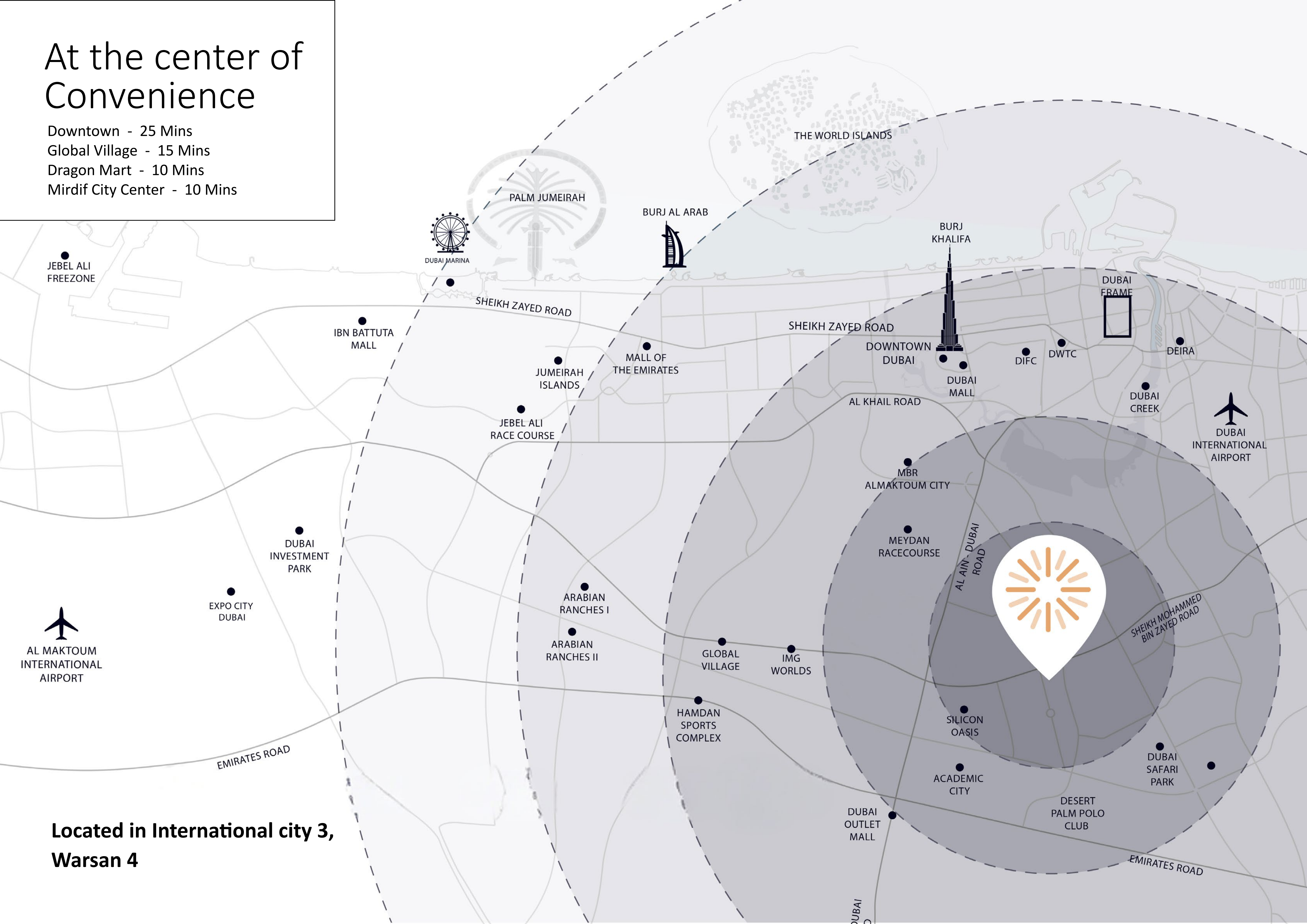
COVENTRY II





# At the center of Convenience

- Downtown - 25 Mins
- Global Village - 15 Mins
- Dragon Mart - 10 Mins
- Mirdif City Center - 10 Mins



Located in International city 3,  
Warsan 4





## Steps from the Metro

Coventry 2 is just a 5-minute walk to the upcoming Metro Blue Line, connecting you to every major destination across Dubai. Whether you're commuting to work, heading out for leisure, or planning your next investment, Coventry 2 places you at the heart of it all.



The *City* outside  
*Peace* within



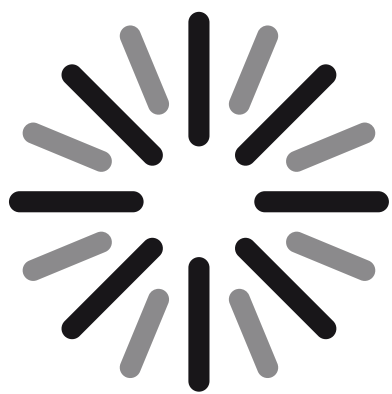




## Designed for Living Built for You

With a selection of stylish studios and 1-bedroom apartments, the development offers smart layouts, high-quality finishes.





## Studio Apartments

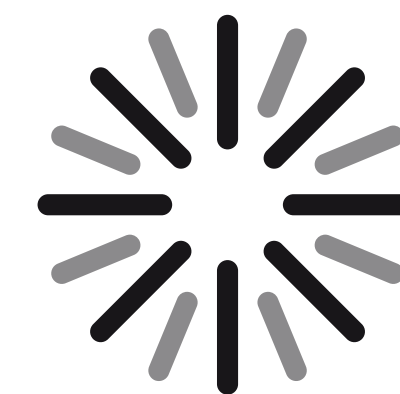
Smartly laid out with modern finishes and functional design, studios offer the perfect start for solo dwellers or smart investors.





# 1 Bedroom Apartments

Open-plan layouts, elegant interiors, and thoughtful design make these homes perfect for those who seek comfort and convenience.





## Lifestyle and Amenities

Enjoy modern amenities like a gym, swimming pool, and landscaped green areas, all within a vibrant, well-connected neighborhood surrounded by supermarkets, restaurants, and essential conveniences.







# Swimming Pool

Rejuvenate in a crystal-clear pool, designed for serenity, relaxation, and pure indulgence. A tranquil escape where calm meets luxury.



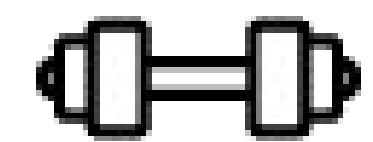


# Fitness Center

A bold, dynamic space where limits are challenged and every step drives you toward peak performance.







# Gym

A space that inspires and empowers, where limits fade  
and every goal feels within reach.



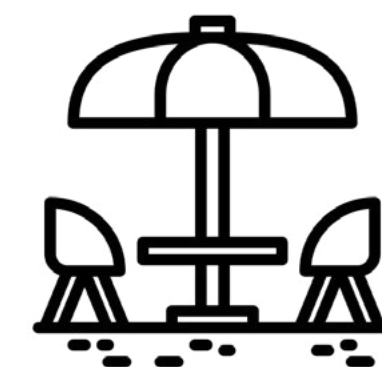


## Kids Play Area

Designed with young explorers in mind, this play area combines fun and creativity, offering an exciting space for children to discover and enjoy.







# Rooftop lounge

Indulge in a delightful culinary journey, where a variety of exquisite dining options fulfill every craving and occasion.





# Green Areas

Beautifully landscaped gardens and open green spaces provide a natural escape from the city buzz, creating a peaceful environment where you can relax, recharge, and reconnect with what matters most.





Rooted in *Calm*  
Surrounded by *Life*





# STUDIO

DISCLAIMER : All dimensions, materials, and drawings are approximate and subject to change without notice. Actual areas may vary, and all images are for illustrative purposes only. The developer reserves the right to make revisions at its absolute discretion.

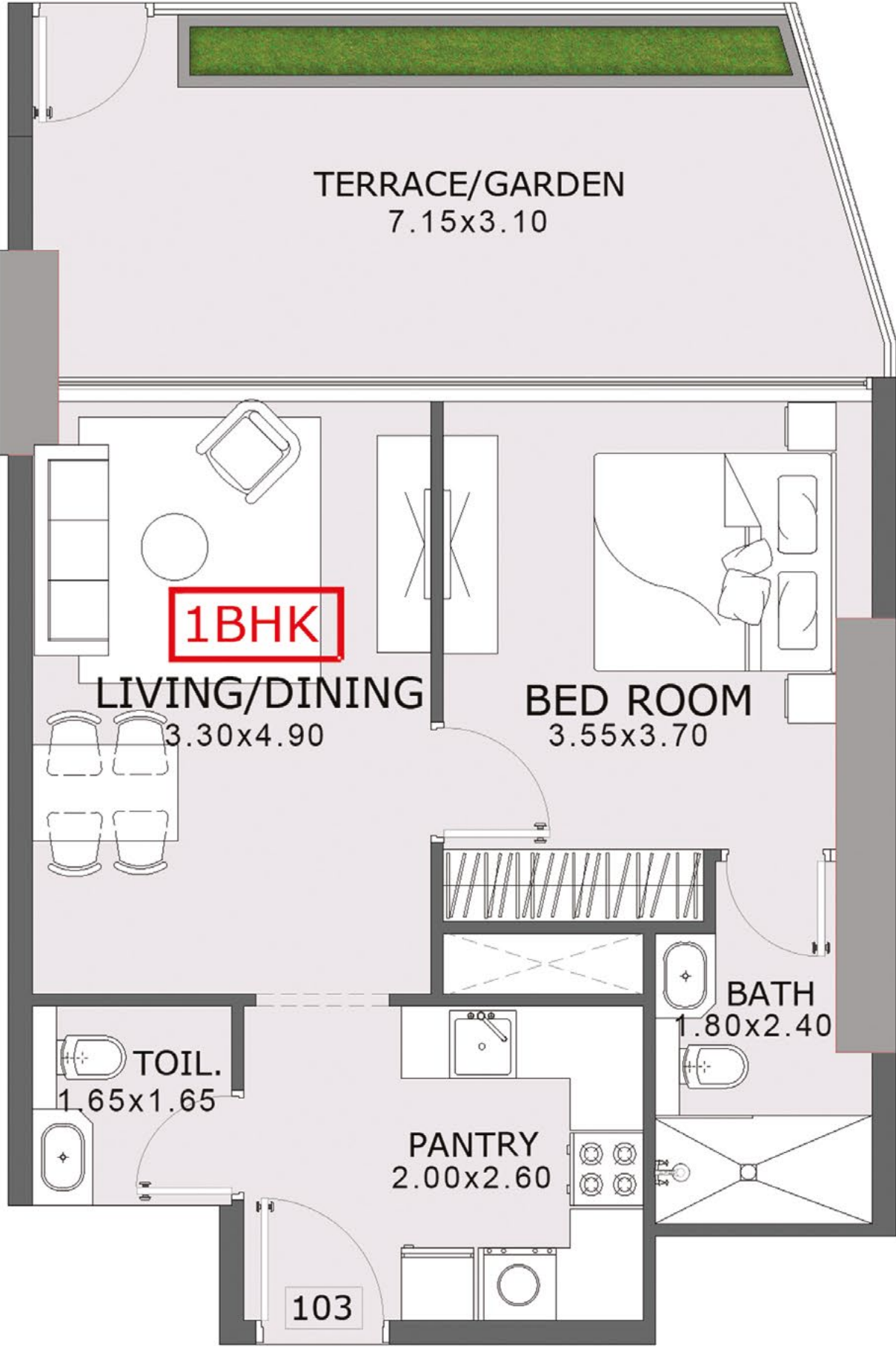


SUITE AREA :	318 Sq.ft
BALCONY AREA :	102 Sq.ft
TOTAL AREA :	420 Sq.ft



# 1 BEDROOM

DISCLAIMER : All dimensions, materials, and drawings are approximate and subject to change without notice. Actual areas may vary, and all images are for illustrative purposes only. The developer reserves the right to make revisions at its absolute discretion.



SUITE AREA :	552 Sq.ft
BALCONY AREA :	229 Sq.ft
TOTAL AREA :	781 Sq.ft



DISCLAIMER : All dimensions, materials, and drawings are approximate and subject to change without notice. Actual areas may vary, and all images are for illustrative purposes only. The developer reserves the right to make revisions at its absolute discretion.

# 1 BEDROOM + STORE



SUITE AREA :	656 Sq.ft
BALCONY AREA :	169 Sq.ft
TOTAL AREA :	825 Sq.ft









# COVENTRY II

A PROJECT BY

